



VICINIA GARDENS

ASSISTED, INTERMEDIATE & MEMORY CARE

SENIOR LIVING CAMPUS



VICINIAGARDENS.COM

WELCOME TO VICINIA GARDENS

Our warm and inviting community provides a secure place for seniors to live while encouraging independence. By providing home cooked meals, medication management, personal care and a full schedule of enrichment activities our residents are able to focus on socializing and enjoying their golden years!

All Vicinia Gardens suites are private for the utmost comfort!

Each suite has a bedroom, bathroom, living room, and a spacious closet. Vicinia Gardens offers a bed & nightstand for all new residents. Families are encouraged to bring in furniture and decorations to make the suite feel more like home! If you have questions on specific measurements or pieces of furniture, please get in contact with Vicinia Gardens and our reliable and friendly staff will walk you through the move in process.

If you loved one needs more space or would like to room with a spouse, please inquire about our double suites with kitchenettes & patios!

Meet the Team

DIRECTORS



LICENSEE · RN · BS · CDCM · CALD - KELLY STEFFEY

Kelly is a licensed Registered Nurse with over 20 years of experience including critical care at McLaren and visiting nurse services. She obtained a Bachelor of Health Care Administration from the University of Michigan-Flint and is a certified dementia care manager and trainer. At Assist Care, she oversees the licensing and operations of our facilities. Kelly's close, compassionate relationship with our residents and directors makes her the perfect leader of our medical team. Kelly teaches all of our dementia training and oversees clinical care options. When she isn't in the office Kelly spends her free time with her three sons and adorable dog Coco!



AMY EDDINGTON - ASSISTED LIVING - RESIDENT DIRECTOR

Amy is a compassionate caregiver and dynamic leader with over 15 years of experience in the long-term care industry. She is recognized for her ability to inspire and support her teams, exemplifying a strong commitment to enhancing the quality of life for residents through compassionate and effective care. Amy's extensive background provides her with valuable insights into the unique challenges and rewards of caregiving environments, enabling her to lead teams with confidence and empathy.

Outside of her professional endeavors, Amy values balance and rejuvenation, which she finds in her love for travel, hiking, and exploring the great outdoors. These personal pursuits not only enrich her life but also deepen her passion for helping others and fostering connections within her community.



LANA HENRY - INTERMEDIATE CARE - RESIDENT DIRECTOR

Lana Henry was born and raised in Flint, Michigan. She began her career at Vicinia Gardens three years ago as a Resident Aide, quickly advancing to Weekend Supervisor and then Campus Assistant. She now holds the well-deserved role of Campus Director in Intermediate Care. With over 18 years of experience, Lana has passionately dedicated herself to working with residents suffering from Alzheimer's, providing them with compassionate care and support.


Lana is also a devoted wife and a loving mother to five children. Outside of her professional life, she cherishes spending quality time with her family, creating lasting memories together.



JEANNE WILHELMI - MEMORY CARE - RESIDENT DIRECTOR

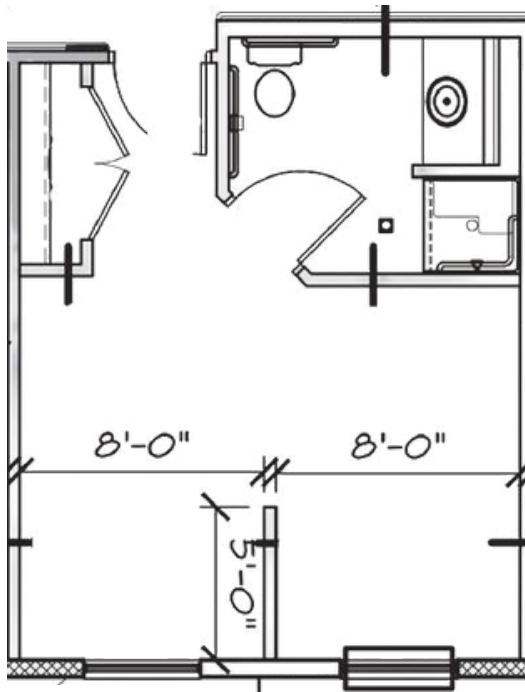
Jeanne was born and raised in Orange County, California. She graduated from San Diego State University with a degree in Business Administration. She relocated to Michigan where she met her husband. Together, they have 3 children. In March of 2023 she started her journey in senior care as a resident aide and on-call supervisor, and she knew it would be a rewarding job. She recently was promoted to Director of Memory care; she truly cares about our residents and their families.

SERVICES & AMENITIES

- 
- Assistance with ADL's
 - Personal Care
 - Medication Management
 - Home Cooked Meals
 - Laundry Services
 - Life Enrichment Programs
 - Creative Recreation
 - Daily Exercise
 - Excursions
 - Bus Transportation
 - Maintenance
 - Beauty Salon
 - Private Suites
 - Free Wi-Fi
 - Emergency Call System
 - Secured Exits
 - Fully Fire Suppressed Building
 - Cable & Phone Services
- Available**
- 24-Hour Staffing
 - Safe Courtyard Access

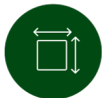
STANDARD FLOOR PLAN

Assisted Living, Intermediate Care & Memory Care



COMMUNITY FEE

\$2,000 one-time



< 500sqft



Private Suite



Furniture Provided*



Dining Plan Included

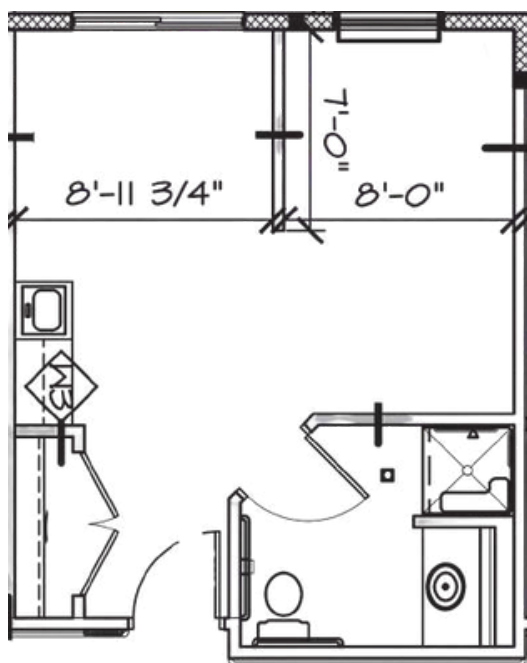
WHAT IS INCLUDED?

- 3 Home-Cooked Meals a day
- Medication Management
- Personal Care Services
- Daily Activities & Outings
- 24/7 Care Staff
- Emergency Call Systems
- Housekeeping & Laundry
- Registered Nurse
- Wireless Internet



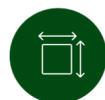
KITCHENETTE FLOOR PLAN

Assisted Living & Intermediate Care



COMMUNITY FEE

\$2,000 one-time



< 500sqft



Private Suite



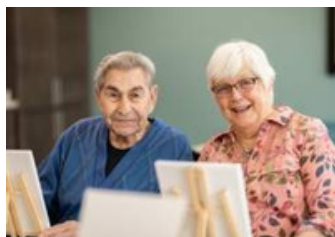
Furniture Provided*



Kitchenette Included

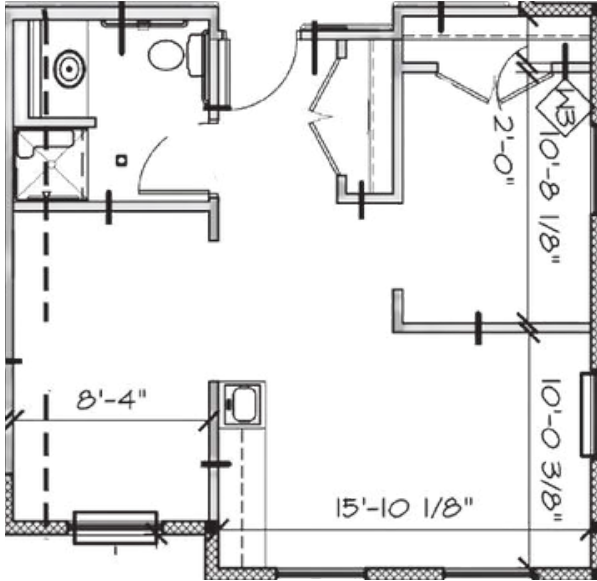
WHAT IS INCLUDED?

- 3 Home-Cooked Meals a day
- Medication Management
- Personal Care Services
- Daily Activities & Outings
- 24/7 Care Staff
- Emergency Call Systems
- Housekeeping & Laundry
- Registered Nurse
- Wireless Internet



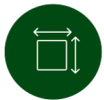
COMPANION SUITE

Intermediate Care Only



COMMUNITY FEE

\$2,000 one-time



< 700sqft



Companion Suite



Furniture Provided*



Kitchenette Included

WHAT IS INCLUDED?

- 3 Home-Cooked Meals a day
- Medication Management
- Personal Care Services
- Daily Activities & Outings
- 24/7 Care Staff
- Emergency Call Systems
- Housekeeping & Laundry
- Registered Nurse
- Wireless Internet



ALL INCLUSIVE RATE STRUCTURE

Vicinia Gardens offers all inclusive rates that include assistance with all aspects of daily living, medication management, home cooked meals, laundry, life enrichment program, life safety system, electronic medication record, safety cameras, wireless internet, and registered nurse.

Community Fee

\$2,000

\$200 Non-Refundable for Initial Assessment

\$1,800 Refundable for Room Refurbishment
Fee

Assisted Living

Private suite \$_____

Intermediate Care

Private Suite \$_____

Double Suite \$_____ per person

Memory Care

Private Suite \$_____



Cable Service:

\$50.00 per
month

Family provides TV



Telephone Service:

\$50.00 per month

One time hook up fee:

\$50.00

Family provides Phone

Rates are as of March 2024 and are subject to change. Rates will be increased annually to match COLA. Due to privately owned infrastructure of our buildings, we require all phone services to be handled through our Staff unless pre-approved in writing by authorized staff member of Assisti Care, LLC. Refundable amounts become non-refundable after move-in.

Sunday

Monday

Tuesday

Wednesday

Thursday

Friday

Saturday

Example Calendar

10:15a- Chair Exercise
11a- Bowling
12p- Yahtzee
2p- Tea/Coffee & Chat w/
conversation ball
3p- Free Style Paint

Palm Sunday

10:15a- Chair Exercise
11a- Corn Hole
12p- Noodle Ball
2p- Color Hour!
3p- Movie & Popcorn
Easter Buffett 1p-2p

Easter Sunday

10:15a- Chair Exercise
11a- Bowling
12p- Yahtzee
2p- Tea/Coffee & Chat w/
conversation ball
3p- Free Style Paint

10:15a- Chair Exercise
11a- Chicken Soup for the
Soul Reading
12p- BINGO
2p- Kings in the corner
4:05p- Tender Heart

Therapy Dog Mocha

10:15a- Chair Exercise
11a- Skip-Bo
12p- BINGO
2p- Garden Check
4:05p- Tender Heart
6p- Burton Senior Center
Dance Outing

Therapy Dog Mocha

10:15a- Chair Exercise
11a- Garden Check
12p- BINGO
**2p- Paparazzi Jewelry
Party (VGIC)**
4:05p- Tender Heart

10:15a- Chair Exercise
11a- Kings in the corner
12p- BINGO
2p- Garden Check
4:05p- Tender Heart
6p- Burton Senior Center
Dance Outing

Therapy Dog Mocha

10:15a- Chair Exercise
**11a- Halls Greenhouse
Outing**
2p- Create our Garden
3p- Spa Hour

Therapy Dog Mocha

10:15a- Chair Exercise
11a- L-R-C
12p- Spa Hour
2p- Hymns for Him
**2p- Shopping at
Community Threads and
Target**

Therapy Dog Mocha

10:15a- Chair Exercise
11a- Puzzle Time
12p- Spa Hour
2p- Chicken Soup for the
Soul Reading
3p- L-R-C

10:15a- Chair Exercise
11a- Fenton Library Outing
12p- Spa Hour
2p- Bunco
3p- Planet Earth
Documentary

10:15a- Chair Exercise
11a- Adopt-a-Pet Outing
2p- Easter Craft
3p- Shut the Box Game

Therapy Dog Mocha

10:15a- Chair Exercise
11a- Chicken Soup for the
Soul Reading
12p- Kings in the corner
2p- Puzzles and Snacks
3p- Shut the Box Game
6p- Ukulele Sing-along

Therapy Dog Mocha

10:15a- Chair Exercise
11a- Adopt-a-Pet Outing
**1p- Laura S's Birthday
Bashi**
2p- Rainy Day Craft
3p- Shut the Box Game

10:15a- Chair Exercise
11a- Skip-Bo
**12p- Entertainment w/
Daniel (50's & 60's)**
2p- Puzzles and Snacks
3p- Shut the Box Game

10:15a- Chair Exercise
11a- Painting and Music
12p- Garden Check
2p- Entertainment w/ Elvis!
3p- Food Demo!

Therapy Dog Mocha

10:15a- Chair Exercise
11a- Puzzle Time
12p- Garden Check
2p- Painting and Music
3p- Food Demo!

Therapy Dog Mocha

10:15a- Chair Exercise
11a- Kings in the corner
12p- Garden Check
**2p- Travel the world to
Meghalaya, India**
3p- Food Demo!

10:15a- Chair Exercise
11a- Chicken Soup for the
Soul Reading
12p- Garden Check
2p- Painting and Music
3p- Puzzle Time

10:15a- Chair Exercise
11a- Puzzle Time
12p- Trivia Time
2p- Happy Hour w/ Bingo
**3p- Drumming exercise @
VIL**

Therapy Dog Mocha

10:15a- Chair Exercise
11a- Bunco
12p- Kickball Circle
**2p- Happy Hour w/ Karaoke
@ VIL**
**3p- Drumming Exercise
@VIL**

Therapy Dog Mocha

10:15a- Chair Exercise
11a- Bunco
12p- Trivia Time
**2p- Happy Hour w/ Family
Feud @ VIL**
**3p- Drumming Exercise
@VIL**

10:15a- Chair Exercise
11a- Bunco
12p- L-R-C
**2p- Happy Hour w/
Jeopardy @ VIL**
**3p- Drumming Exercise
@VIL**

10:15a- Chair Exercise
11a- Spa Hour
12p- Ice Cream Social
2p- 12p- Crosswords &
Word Finds
3p- Movie & Popcorn

April Fools' Day

10:15a- Chair Exercise
11a- Spa Hour
12p- L-R-C
2p- Tea/Coffee & Chat w/
conversation ball
3p- Movie & Popcorn

Therapy Dog Mocha

10:15a- Chair Exercise
11a- Spa Hour
12p- Ice Cream Social
2p- L-C-R
3p- Movie & Popcorn

Therapy Dog Mocha

10:15a- Chair Exercise
11a- Spa Hour
12p- Crosswords & Word
Finds
2p- Tea/Coffee & Chat w/
conversation ball
3p- Movie & Popcorn

Earth Day

10:15a- Chair Exercise
11a- Spa Hour
12p- Ice Cream Social
2p- Button Art
3p- Movie & Popcorn

Calendar Legend:

Red = Tender Heart

Blue = Entertainment

Green = Outing

Pink = Special Event

10:15a- Chair Exercise
11a- Bowling
12p- Yahtzee
2p- Tea/Coffee & Chat w/
conversation ball
3p- Free Style Paint

ALL ACTIVITIES ARE SUBJECT TO CHANGE!!!

FREQUENTLY ASKED QUESTIONS

What are the requirements for admission?

- Deposit placed with Director
- Comprehensive Assessment completed by the nurse
- List of Medications signed by physician
- Health Care Appraisal signed by physician
- Chest x-ray or TB test (less than one year old)
- Copy of identification and insurance cards

When can I come and visit?

Feel free to visit any time - our community is open 24/7 for care and comfort. When you arrive to the building please ring the doorbell in the main foyer, and a staff member will come to assist you inside. Doors are coded for both resident and staff safety. We thank you for your courtesy and patience while our staff makes their way to unlock the doors. To schedule an appointment please call our leasing department @ 810-354-7050.

May family join for meals?

The kitchen requests that they have a 24-hour notice to make sure there is enough food made for everyone. Families are permitted to join us for meals with advanced notice.

Is there a gathering room available?

You can reserve the community gardens room for family events, you can book the room with any staff member.

What if we experience technology difficulties?

If you are having an issue with cable, phone, Wi-Fi please call the front office.

May we hang pictures and curtains in resident rooms?

You may hang items on the wall of your loved one's suite, but the family is responsible for hanging these items.



Contact Us

Leasing

810-354-7050

leasing@viciniagardens.com

4016 · 4034 · 4045 Vicinia Way

Fenton, MI

810-354-8136

Executive Team

Main Line · 810-354-8136

Corporate · 810-629-9368

Leasing · 810-354-7050