



# VICINIA GARDENS

SENIOR *Living Campus*



VICINIAGARDENS.COM

# WELCOME TO VICINIA GARDENS

Our warm and inviting community provides a secure place for seniors to live while encouraging independence. By providing home cooked meals, medication management, personal care and a full schedule of enrichment activities our residents are able to focus on socializing and enjoying their golden years!

All Vicinia Gardens suites are private for utmost comfort! Each suite has a bedroom, bathroom, living room and spacious closet. Vicinia Gardens offers a bed & nightstand for all new residents. Families are encouraged to bring in furniture and decorations to make the suite feel more like home! If you have questions on specific measurements or pieces of furniture, please get in contact with Vicinia Gardens and our reliable and friendly staff will walk you through the move-in process.

Vicinia Gardens was If your loved one needs more space or would like to room with a spouse, please inquire about our double suites or suites with kitchenettes & patios!

# Meet the Team

## DIRECTORS



CAMPUS DIRECTOR - JESSICA SHERBINO

Jessica was born and raised in Montrose, Michigan. She has over 9 years of long-term care experience, including both mental health training and clinical care in this setting. She is fantastic with our residents and her clinical knowledge has become a great asset to our team. When she isn't working, you can find her at home with husband Jay and kids Madison & Xander! Jessica loves being a Mom and was married in fall of 2021! Caregiving and leadership are two of Jessica's passions, and we love having her on our leadership team. If you have any questions regarding our campus or resident care and comfort please reach out to Jessica!



LICENSEE · RN · BS · CDCM · CALD - KELLY STEFFEY

Kelly is part owner of Assisti Care LLC, our management company based in Fenton. She is a licensed Registered Nurse with over 20 years of experience including critical care at McLaren and visiting nurse services. She obtained a Bachelor of Health Care Administration from the University of Michigan-Flint and is a certified dementia care manager and trainer. At Assisti Care, she oversees the licensing and operations of our facilities. Kelly's close, compassionate relationship with our residents and directors makes her the perfect leader of our medical team. Kelly teaches all of our dementia training and oversees clinical care options. When she isn't in the office Kelly spends her free time with her three sons and adorable dog Coco!

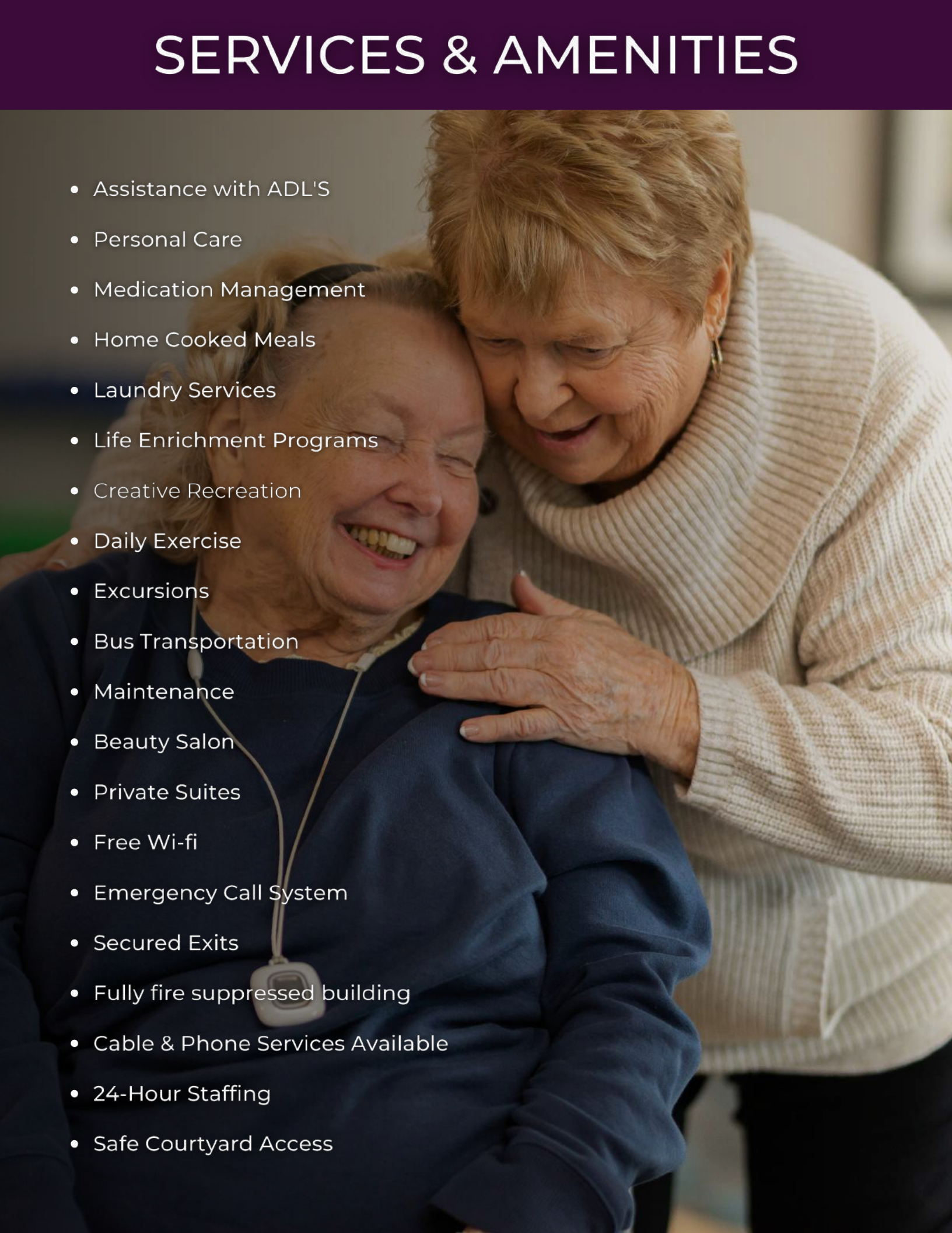


MARKETING & LEASING DIRECTOR - MADISON BRUCE

Madison was born and raised in Gregory, MI. She moved to California in 2008 and went on to attend California State University Long Beach. With an eye for design, and over 5 years of experience in healthcare and digital marketing, Madison made a great addition to our Executive team. She is compassionate and kind towards our residents, and is always working hard to grow our community. Madison oversees marketing and leasing for the Vicinia Gardens campus and works on-site at The Independent. She currently lives in Grand Blanc, MI with her 5 year old lab husky mix, Ember! If you or someone you know is interested in learning more about our community give her a call!

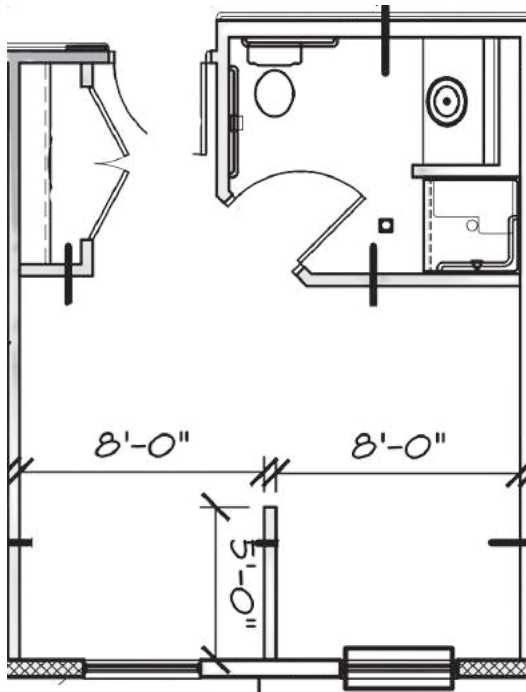


# SERVICES & AMENITIES

- 
- A photograph of two elderly women. The woman on the left is wearing a dark blue sweater and has her eyes closed, smiling broadly. The woman on the right is wearing a light-colored, ribbed sweater and is leaning in to hug the first woman. The background is softly blurred, suggesting an indoor setting.
- Assistance with ADL'S
  - Personal Care
  - Medication Management
  - Home Cooked Meals
  - Laundry Services
  - Life Enrichment Programs
  - Creative Recreation
  - Daily Exercise
  - Excursions
  - Bus Transportation
  - Maintenance
  - Beauty Salon
  - Private Suites
  - Free Wi-fi
  - Emergency Call System
  - Secured Exits
  - Fully fire suppressed building
  - Cable & Phone Services Available
  - 24-Hour Staffing
  - Safe Courtyard Access

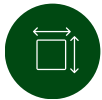
# STANDARD FLOOR PLAN

Assisted Living, Intermediate Care & Memory Care



## COMMUNITY FEE

\$2,000 one-time



< 500sqft



Private Suite



Furniture Provided\*



Dining Plan Included

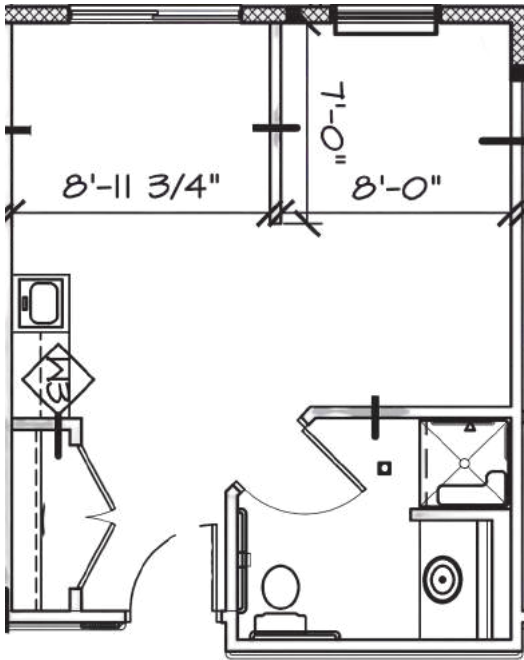
## WHAT IS INCLUDED?

- 3 Home-Cooked Meals a day
- Medication Management
- Personal Care Services
- Daily Activities & Outings
- 24/7 Care Staff
- Emergency Call Systems
- Housekeeping & Laundry
- Registered Nurse On-Call
- Wireless Internet



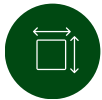
# KITCHENETTE FLOOR PLAN

Assisted Living & Intermediate Care



## COMMUNITY FEE

\$2,000 one-time



< 500sqft



Private Suite



Furniture Provided\*



Kitchenette Included

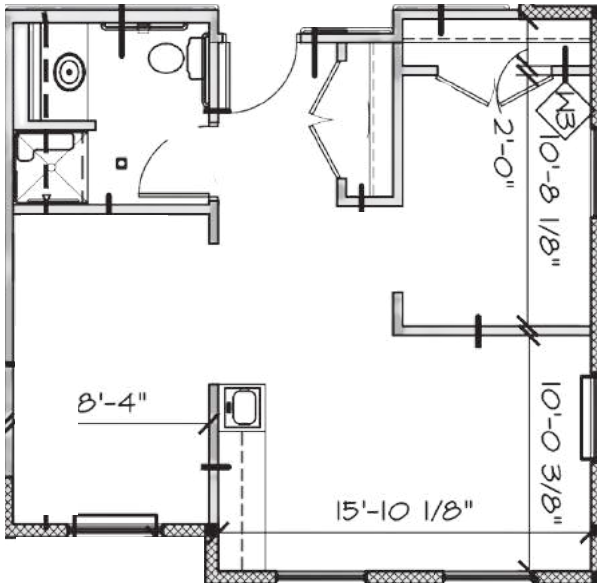
## WHAT IS INCLUDED?

- 3 Home-Cooked Meals a day
- Medication Management
- Personal Care Services
- Daily Activities & Outings
- 24/7 Care Staff
- Emergency Call Systems
- Housekeeping & Laundry
- Registered Nurse On-Call
- Wireless Internet



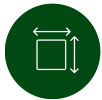
# COMPANION SUITE

Intermediate Care Only



## COMMUNITY FEE

\$2,000 one-time



< 700sqft



Companion Suite



Furniture Provided\*



Kitchenette Included

## WHAT IS INCLUDED?

- 3 Home-Cooked Meals a day
- Medication Management
- Personal Care Services
- Daily Activities & Outings
- 24/7 Care Staff
- Emergency Call Systems
- Housekeeping & Laundry
- Registered Nurse On-Call
- Wireless Internet



# ALL INCLUSIVE RATE STRUCTURE

Vicinia Gardens offers all inclusive rates that include assistance with all aspects of daily living, medication management, home cooked meals, laundry, life enrichment program, life safety system, electronic medication record, safety cameras, wireless internet, and registered nurse on call.

## *Community Fee*

\$2,000

\$200 Non-Refundable for Initial Assessment

\$1,800 Refundable for Room Refurbishment  
Fee

## *Assisted Living*

Private suite \$4,500 - 5,500

## *Intermediate Care*

Private Suite \$5,000 - 5,500

Double Suite \$3,500 - 3,800 per person

## *Memory Care*

Private Suite \$5,500 - 6,000



### **Cable Service:**

\$50.00 per  
month

Family provides TV



### **Telephone Service:**

\$50.00 per month

One time hook up fee:

\$50.00

Family provides Phone



# MOVE-IN CHECKLIST

## *Vicinia Gardens Move-In Items :*

Vicinia Gardens provides a twin bed and night stand in all licensed building on campus. Please inquire with your director to see if more furniture options are available for your specific community!

- Personal Care Items (toiletries, incontinence care items, hair care, etc.)
- Bedding (comforter, blankets, pillows, pillow cases)
- Laundry Basket (labeled with resident name)
- Assistive Devices (hearing aides, walker, glasses, etc.)
- Shower Curtain
- Clothes
- Shoes
- Hangers
- Wall Décor (family photos, art, anything to make the room feel more like home!)
- Digital Clock
- Curtains (blinds come standard in each room)
- Couch / Recliner
- Dresser
- End Tables
- Floor Lamp
- Console Table / TV Mount
- TV
- Corded Phone
- Mini Fridge

Please let us know if you have any questions or concerns regarding furniture or items off the list. Our dedicated team is here to answer any questions you may have about taking the next step into long-term care!

Please note, some items on the list are optional, however some items such as clothes, personal care, and assistive devices are not. Please make sure your loved one arrives to Vicinia Gardens with the items they will need to make our community their home!

Sunday

Monday

Tuesday

Wednesday

Thursday

Friday

Saturday

# Example Calendar

<p>10:15a- Chair Exercise 11a- Bowling 12p- Yahtzee 2p- Tea/Coffee &amp; Chat w/ conversation ball 3p- Free Style Paint</p> <p>Palm Sunday</p>	<p>10:15a- Chair Exercise 11a- Chicken Soup for the Soul Reading 12p- BINGO 2p- Kings in the corner 4:05p- <b>Tender Heart</b></p>	<p>10:15a- Chair Exercise 11a- Halls Greenhouse Outing 2p- Create our Garden 3p- Spa Hour</p>	<p>10:15a- Chair Exercise 11a- Adopt-a-Pet Outing 2p- Easter Craft 3p- Shut the Box Game</p> <p>Passover Begins</p>	<p>10:15a- Chair Exercise 11a- Painting and Music 12p- Garden Check 2p- Entertainment w/ Elvis! 3p- Food Demo!</p>	<p>10:15a- Chair Exercise 11a- Puzzle Time 12p- Trivia Time 2p- Happy Hour w/ Bingo 3p- <b>Drumming exercise @ VIL</b></p>	<p>10:15a- Chair Exercise 11a- Spa Hour 12p- L-R-C 2p- Tea/Coffee &amp; Chat w/ conversation ball 3p- Movie &amp; Popcorn</p> <p>April Fools' Day</p>
<p>10:15a- Chair Exercise 11a- Corn Hole 12p- Noodle Ball 2p- Color Hour! 3p- Movie &amp; Popcorn <b>Easter Buffett 1p-2p</b></p> <p>Easter Sunday</p>	<p>10:15a- Chair Exercise 11a- Skip-Bo 12p- BINGO 2p- Garden Check 4:05p- <b>Tender Heart</b> 6p- Burton Senior Center Dance Outing <b>Therapy Dog Mocha</b></p>	<p>10:15a- Chair Exercise 11a- L-R-C 12p- Spa Hour 2p- Hymns for Him 2p- Shopping at Community Threads and Target</p>	<p>10:15a- Chair Exercise 11a- Chicken Soup for the Soul Reading 12p- Kings in the corner 2p- Puzzles and Snacks 3p- Shut the Box Game 6p- Ukulele Sing-along</p>	<p>10:15a- Chair Exercise 11a- Bunco 12p- Kickball Circle 2p- <b>Happy Hour w/ Karaoke @ VIL</b> 3p- <b>Drumming Exercise @VIL</b></p>	<p>10:15a- Chair Exercise 11a- Bunco 12p- Trivia Time 2p- <b>Happy Hour w/ Family Feud @ VIL</b> 3p- <b>Drumming Exercise @VIL</b></p>	<p>10:15a- Chair Exercise 11a- Spa Hour 12p- Ice Cream Social 2p- L-C-R 3p- Movie &amp; Popcorn</p>
<p>10:15a- Chair Exercise 11a- Corn Hole 12p- Noodle Ball 2p- Color Hour! 3p- Movie &amp; Popcorn</p>	<p>10:15a- Chair Exercise 11a- Kings in the corner 12p- Garden Check 2p- <b>Travel the world to Meghalaya, India</b> 3p- Food Demo!</p>	<p>10:15a- Chair Exercise 11a- Chicken Soup for the Soul Reading 12p- Garden Check 2p- Painting and Music 3p- Food Demo!</p>	<p>10:15a- Chair Exercise 11a- Kings in the corner 12p- Garden Check 2p- <b>Travel the world to Meghalaya, India</b> 3p- Food Demo!</p>	<p>10:15a- Chair Exercise 11a- BUNCO 12p- Trivia Time 2p- <b>Happy Hour w/ Family Feud @ VIL</b> 3p- <b>Drumming Exercise @VIL</b></p>	<p>10:15a- Chair Exercise 11a- BUNCO 12p- Trivia Time 2p- <b>Happy Hour w/ Jeopardy @ VIL</b> 3p- <b>Drumming Exercise @VIL</b></p>	<p>10:15a- Chair Exercise 11a- Spa Hour 12p- Ice Cream Social 2p- Button Art 3p- Movie &amp; Popcorn</p> <p>Earth Day</p>
<p>10:15a- Chair Exercise 11a- Bowling 12p- Yahtzee 2p- Tea/Coffee &amp; Chat w/ conversation ball 3p- Free Style Paint</p>	<p>10:15a- Chair Exercise 11a- Kings in the corner 12p- BINGO 2p- Garden Check 4:05p- <b>Tender Heart</b> 6p- Burton Senior Center Dance Outing <b>Therapy Dog Mocha</b></p>	<p>10:15a- Chair Exercise 11a- Fenton Library Outing 12p- Spa Hour 2p- Bunco 3p- Planet Earth Documentary</p>	<p>10:15a- Chair Exercise 11a- Skip-Bo 12p- Entertainment w/ Daniel (50's &amp; 60's) 2p- Puzzles and Snacks 3p- Shut the Box Game</p>	<p>10:15a- Chair Exercise 11a- Chicken Soup for the Soul Reading 12p- Garden Check 2p- Painting and Music 3p- Puzzle Time</p>	<p>10:15a- Chair Exercise 11a- Bunco 12p- Trivia Time 2p- <b>Happy Hour w/ Jeopardy @ VIL</b> 3p- <b>Drumming Exercise @VIL</b></p>	<p>10:15a- Chair Exercise 11a- Spa Hour 12p- Ice Cream Social 2p- Button Art 3p- Movie &amp; Popcorn</p> <p>Earth Day</p>

**Calendar Legend:**

- Red = Tender Heart
- Blue = Entertainment
- Green = Outing
- Pink = Special Event

ALL ACTIVITIES ARE SUBJECT TO CHANGE!!!

# FREQUENTLY ASKED QUESTIONS

## **What are the requirements for admission?**

- Deposit placed with Director
- Comprehensive Assessment completed by Director
- List of Medications signed by physician
- Health Care Appraisal signed by physician
- Recent Negative COVID-19 Test or Vaccination Card
- Chest x-ray or TB test (less than one year old)
- Copy of identification and insurance cards

## **When can I come and visit?**

Feel free to visit any time and follow all MDHHS guidelines. Our community is open 24/7 for care and comfort. When you arrive to the building please ring the doorbell in the main foyer, and a staff member will come to assist you inside. Doors are coded for both resident and staff safety. We thank you for your courtesy and patience while our staff makes their way to unlock the doors.

## **May family join for meals?**

The kitchen requests that they have a 24-hour notice to make sure there is enough food made for everyone. At this time, families are permitted to join us for meals, but you must remain in the residents suite as to prevent any possible spread of COVID-19.

## **Is there a gathering room available?**

You can reserve the community gardens room for family events, you can book the room with any staff member.

## **What if we experience technology difficulties?**

If you are having an issue with cable, phone, Wi-Fi please call the front office.

## **May we hang pictures and curtains in resident rooms?**

You may hang items on the wall of your loved one's suite, but the family is responsible for hanging these items.





## *Contact Us*

### **Leasing**

810-354-7080

[leasing@viciniagardens.com](mailto:leasing@viciniagardens.com)

4016 · 4034 · 4045 Vicinia Way

Fenton, MI

810-354-8136

### **Executive Team**

Main Line · 810-354-8136

Corporate · 810-629-9368

Leasing · 810-354-7080